

Sellomics

FROM LAB TO SUCCESS

CATALOGUE

Quality in Cell Biology

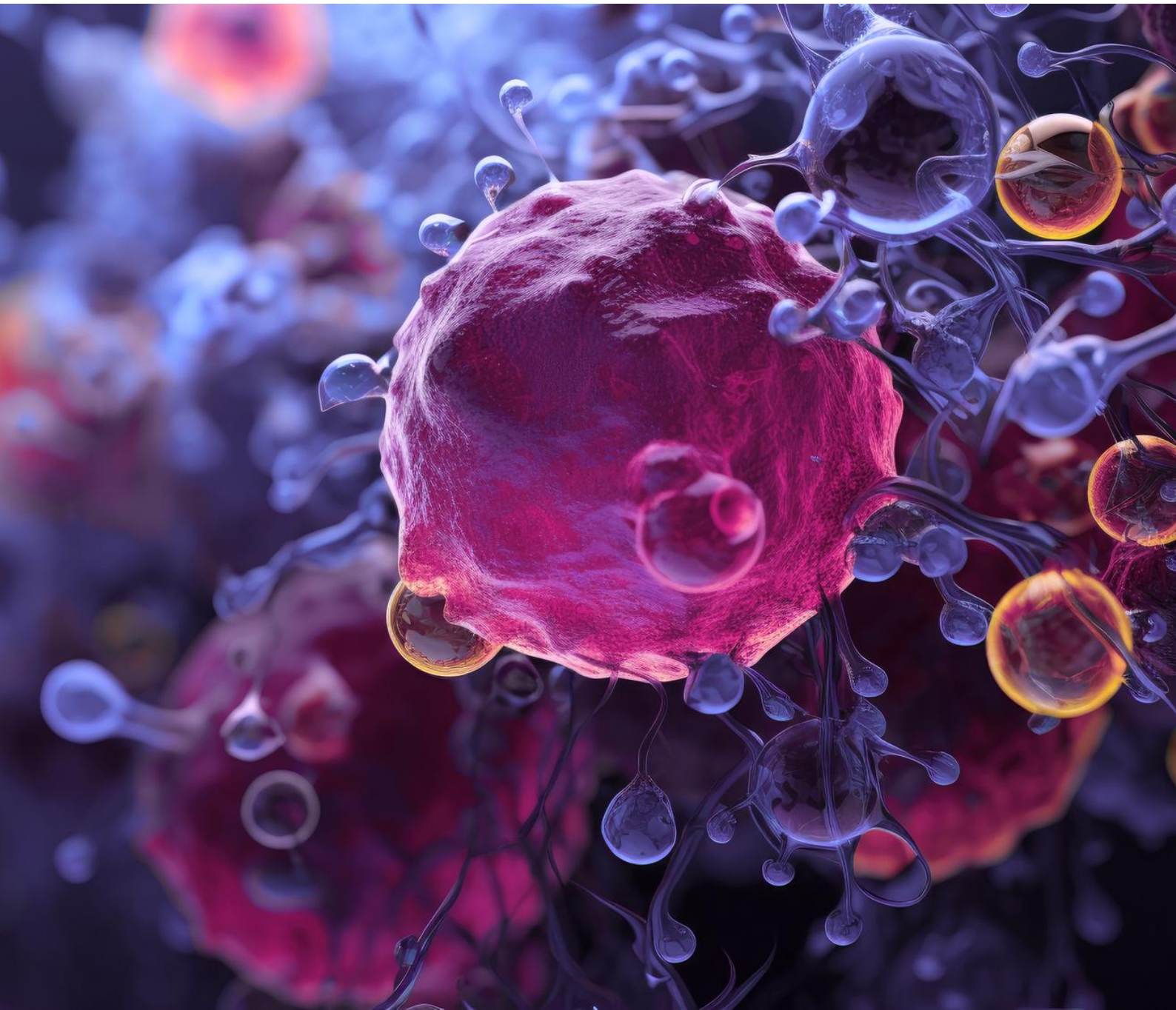


Table of Contents

Introduction	03
ELISA Kits	04
Food Safety ELISA Kits	06
Antibodies	09
Molecular Biology	12
Metabolic, Enzymatic, Apoptotic Assays	14
Liquid Handling	15
Dissociated Tissue & Tumors Cells	18
Human Intestinal Models	20
IHC, ISH, TMAs and Pathology	22

Introduction

Sellomics is your Europe-wide partner for R&D and Manufacturing. We bring innovative solutions from global suppliers to European researchers in Pharma, Biotech, University and IVD.

Our Mission

We are scientists at heart. We believe that true innovation is only possible when scientists and suppliers work together to create a shared future.

Our mission is to bring innovative research tools and solutions to researchers to help bringing new therapies to patients.

Our Values

- ✓ **Integrity:** Doing the right thing even if no-one is watching, in our clients', customers' and patients' best interest.
- ✓ **Constant learning:** Being a little bit better every day, to help bringing the best solutions to life.
- ✓ **Initiative:** A proactive approach to problems, strategies and interactions.

Our Credo

Sellomics was born out of a vision to provide clarity to our clients and customers in a collaborative spirit.

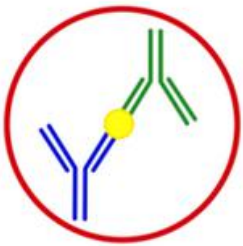
- We believe in the energy of a strong and appealing vision and its empowering effect on organizations.
- We believe in the power of humor and lightness in business to overcome politics and create strong bonds.
- We believe in the beauty of simplicity and clarity, prioritization, focus and communication.
- We believe in agility, ingenuity and boldness guided by a concrete vision to cope in our VUCA world.



ELISA Kits:



- 13000+ Kits
- 4 different formats
- 12 species
- Free technical support
- Lowest complaint rate on the market



Traditional

Foundational ELISA kit with conventional workflow at a reasonable price. High level of quality and sensitivity

Benefits:

- Cost-effective
- >6000 Targets
- Simple procedure
- 12 months shelf life

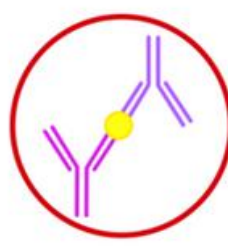


Ready-to-use

Optimized version of the traditional kits with pre-diluted detection reagents, shorter experimental time and enhanced stability.

Benefits:

- >6000 Targets
- Pre-diluted reagents
- Shorter experimental time
- 16 months shelf life



EASYStep

Really short ELISA with much less hands-on time.

Benefits:

- Super fast
- Small sample volume
- Easy storage
- 60 Targets



EASYStep pro

Optimized version of the EASYStep ELISAs with almost instant execution (1.5h)

Benefits:

- Even faster
- Small sample volume
- Very easy procedure
- 20 Targets

	Traditional	Ready-to-Use	EASYStep	EASYStep pro
Experimental time	4.5h	3.5h	2.5h	1.5h
Storage	-20°C and 4°C	-20°C	4°C	4°C
Pre-diluted Detection Reagents	No	Yes	No	No
No. Targets	>6000	>6000	60	20
Sample volume	100µl	100µl	50µl	50µl
Incubation Steps	4	4	3	2

Available Targets:



Human



Bovine



Canine



Equine



Mouse



Rat



Rabbit



Simian



Guinea Pig



General



Chicken



Porcine

Traditional



Ready-to-use



EASYStep



EASYStep pro



Food Safety ELISA Kits:



- Test for contaminants in a variety of sample types
- Competitive inhibition format
- All our products undergo three quality control checks
- Free technical support
- Lowest complaint rate on the market
- 96-well format

Target Categories

Mycotoxins

- Ochratoxin A (OTA)
- Aflatoxin M1 (AFM1)
- Aflatoxin B1 (AFB1)

Residues and contaminants

- Nitrofurantoin (AHD)
- Chloramphenicol (CAP)
- Quinolones (QNs)

Antibiotics

- Amoxicillin (AMO)
- Erythromycin (ERY)
- Tetracyclines (TCs)

Food Dyes

- Malachite Green (MG)
- Sudan I (SUD)

Why Reddot Biotech's kits?

Universal reactivity

Wide range of sample types

High stability, long shelf life

Wide variety of popular targets

Fast and simple procedure

Competitive Inhibition

Catalog Number	Full Name	Sample Type	Standard Range	Assay Length
RDF-E043	Sulfamethazine (SM2) ELISA Kit	Muscle, Milk, Urine, Honey, Egg	0.5-40.5ppb	60min
RDF-E002	Nitrofurantoin (AMOZ) ELISA Kit	Muscle, Liver, Honey, Milk, Milk powder, Egg powder, Feed, Egg	0.05-4.05ppb	60min
RDF-E003	Nitrofurantoin (AOZ) ELISA Kit	Muscle, Liver, Honey, Milk, Milk powder, Egg powder, Feed, Egg	0.05-4.05ppb	60min
RDF-E004	Nitrofurantoin (AHD) ELISA Kit	Muscle, Liver, Honey, Milk, Milk powder, Feed, Egg powder, Egg	0.02-1.62ppb	60min
RDF-E005	Nitrofurazone (SEM) ELISA Kit	Muscle, liver, Honey, Milk, Milk powder, Egg powder, Feed, Egg	0.05-4.05ppb	60min
RDF-E007	Olaquinox (OQX) ELISA Kit	Muscle, Feed	0.5-40.5ppb	75min
RDF-E008	Olaquinox Metabolites (MQCA) ELISA Kit	Muscle, Liver	0.3-24.3ppb	75min
RDF-E009	Dexamethasone (DEX) ELISA Kit	Muscle, Milk, Feed	0.1-8.1ppb	75min
RDF-E010	Melamine (MEL) ELISA Kit	Milk powder, Milk, Muscle, Liver, Feed, Egg, Serum	2-162ppb	45min
RDF-E011	Metronidazole (MNZ) ELISA Kit	Muscle, Honey, Egg, Milk	1.5-24ppb	75min
RDF-E012	Ractopamine (RAC) ELISA Kit	Muscle, Liver, Feed, Urine	0.1-8.1ppb	45min
RDF-E013	Malachite Green (MG) ELISA Kit	Muscle	0.025-0.4ppb	75min
RDF-E015	Phenylethanolamine A (PHEA) ELISA Kit	Muscle, Urine, Feed	0.1-8.1ppb	45min
RDF-E016	Sudan I (SUD) ELISA Kit	Tomato juice, Ketchup, Chilli sauce, Chilli powder, Feed, Egg	0.3-24.3ppb	75min
RDF-E017	Salbutamol (SAL) ELISA Kit	Muscle, Urine, Feed, Liver	0.1-8.1ppb	45min
RDF-E020	Trimethoprim (TMP) ELISA Kit	Muscle, Feed, Kidney, Liver, Serum, Urine, Egg	0.03-2.43ppb	60min
RDF-E021	Sulfamethoxazole (SMZ) ELISA Kit	Muscle, Honey, Serum, Urine, Egg, Milk, Feed	0.1-8.1ppb	60min
RDF-E022	Sarafloxacin (SAR) ELISA Kit	Muscle, Honey, Milk, Milk powder, Egg, Urine	0.1-8.1ppb	60min
RDF-E023	Trimethoprim (TMP) ELISA Kit	Muscle, Feed, Serum, Urine	0.015-1.215ppb	60min
RDF-E024	Chlortetracycline (CTC) ELISA Kit	Muscle, Liver, Egg, Honey, Urine	0.2-16.2ppb	75min
RDF-E025	Clenbuterol (CLE) ELISA Kit	Muscle, Feed, Urine	0.05-4.05ppb	45min
RDF-E026	Cimaterol (CIM) ELISA Kit	Muscle, Urine, Serum	0.2-16.2ppb	45min
RDF-E027	Diazepam (DZP) ELISA Kit	Muscle, Urine, Feed	0.3-24.3ppb	75min
RDF-E031	Streptomycin (SM) ELISA Kit	Muscle, Honey, Milk, Milk powder, Egg	0.1-8.1ppb	75min
RDF-E032	Enrofloxacin (ENR) ELISA Kit	Muscle, Honey, Milk, Milk powder, Egg.	0.1-8.1ppb	60min
RDF-E033	Ciprofloxacin (CPFX) ELISA Kit	Muscle, Honey, Milk, Egg, Milk powder	0.1-8.1ppb	60min
RDF-E034	Quinolones (QNs) ELISA Kit	Muscle, Honey, Egg, Milk, Milk powder, Urine	0.1-8.1ppb	60min
RDF-E035	Nitroimidazoles (NMZs) ELISA Kit	Muscle, Honey, Egg	1.5-24ppb	75min
RDF-E040	Sulfonamides of 3-in-1 (SAs) ELISA Kit	Muscle, Serum, Urine, Milk, Egg, Feed, Honey	0.1-8.1ppb	60min
RDF-E041	Tetracyclines (TCs) ELISA Kit	Muscle, Liver, Egg, Honey, Urine, Milk, Milk powder	0.3-24.3ppb	75min
RDF-E043	Sulfamethazine (SM2) ELISA Kit	Muscle, Milk, Urine, Honey, Egg	0.5-40.5ppb	60min
RDF-E044	Chloramphenicol (CAP) ELISA Kit	Muscle, Liver, Honey, Milk, Egg, Water, Urine, Serum, Feed, Milk powder	0.025-2.025ppb	75min

Catalog Number	Full Name	Sample Type	Standard Range	Assay Length
RDF-E049	Sulfonamides (SAs) ELISA Kit	Muscle, Serum, Urine, Honey, Milk, Egg	0.5-40.5ppb	60min
RDF-E046	Tetracyclines (TCs) ELISA Kit	Muscle, Liver, Egg, Honey, Urine, Milk, Milk powder	0.05-4.05ppb	75min
RDF-E050	Sulfaquinoxaline (SQX) ELISA Kit	Muscle, Serum, Urine, Honey, Milk, Feed, Egg	0.5-40.5ppb	60min
RDF-E051	Sulfamonomethoxine (SMM) ELISA Kit	Muscle, Serum, Urine, Honey, Milk, Egg	0.05-4.05ppb	60min
RDF-E052	Sulfametoxydiazine (SMD) ELISA Kit	Muscle, Serum, Urine, Honey, Milk, Egg	0.05-4.05ppb	60min
RDF-E054	Fluoroquinolones (FQNs) ELISA Kit	Muscle, Honey, Milk, Milk powder, Egg, Urine	0.2-16.2ppb	60min
RDF-E056	Enrofloxacin (ENR) ELISA Kit	Muscle, Honey, Milk, Milk powder, Egg	0.2-16.2ppb	60min
RDF-E058	Tylosin (TYL) ELISA Kit	Muscle, Honey, Milk, Egg	0.5-40.5ppb	75min
RDF-E061	Lincomycin (LIN) ELISA Kit	Muscle, Honey, Urine	0.05-4.05ppb	45min
RDF-E062	Florfenicol (FF) ELISA Kit	Muscle, Liver, Honey, Milk, Milk powder, Feed, Egg	0.15-12.15ppb	45min
RDF-E063	Tilmicosin (TMC) ELISA Kit	Muscle, Liver, Honey, Milk, Egg	0.5-40.5ppb	45min
RDF-E064	Tetracyclines (TCs) ELISA Kit	Muscle, Egg, Liver, Feed, Raw milk, Finished milk	0.15-12.15ppb	50min
RDF-E065	Beta-lactam Antibiotic (β -lactams) ELISA Kit	Muscle, Egg, Milk	0.2-16.2ppb	75min
RDF-E066	Diclazuril (Dic) ELISA Kit	Muscle	0.5-12ppb	45min
RDF-E068	Neomycin (Neo) ELISA Kit	Muscle, Milk, Egg	0.5-40.5ppb	45min

Sandwich ELISA

Catalog Number	Full Name	Sample Type	Standard Range	Assay Length
RDF-E049	Sulfonamides (SAs) ELISA Kit	Muscle, Serum, Urine, Honey, Milk, Egg	0.5-40.5ppb	60min



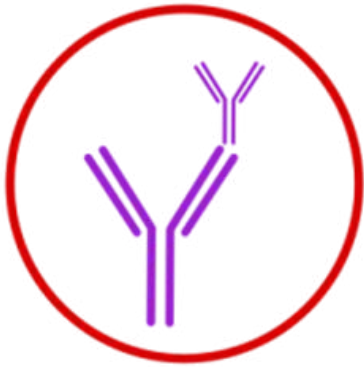
Antibodies



- >15000 unique antibodies available
- Variety of hosts and reactivities
- All our products undergo three quality control checks
- Free technical support
- Lowest complaint rate on the market

Popular Applications





POLYCLONAL

Polyclonal Antibodies (PABs) are made using many different immune cells and are specific for different epitopes on the same antigen.

Benefits

- Enhanced sensitivity
- More selection
- Less expensive



MONOCLONAL

Monoclonal Antibodies (MAbs) are made using identical clones of the same cell and are specific for only one epitope on an antigen.

Benefits

- High specificity
- Low cross-reactivity
- Low variability



SECONDARY

A secondary antibody is not designed to bind the target analyte directly but will help with detection by binding to the primary antibody.

Benefits

- Enhances specificity
- Binds to primary antibody



FLOW CYTOMETRY

Antibodies used for flow cytometry have a fluorescent marker attached that can be detected when they bind to the target of interest on or in a cell.

Benefits

- For use with flow cytometer
- 12 different fluorophores available

All Applications



Flow Cytometry



Immunohistochemistry



Western Blot & IP



ELISA



Immunofluorescence



Molecular Biology and Assays



- **Extraction and purification kits:** plasmid, column based, magnetic bead, reagent based
- **Proteomics:** PCR mix, western substrates, protein staining solution
- Protein and DNA ladders
- Protein quantification Assays
- Apoptosis Detection Kit
- Cell counting kit
- Cell cycle kit
- Enzyme metabolism assays

DNA /RNA ISOLATION KITS



Column Based

- Uses silica gel membrane to extract DNA or RNA
- Column or Dual Reagent+Column methods available
- For use with PCR, Gene Cloning, cDNA synthesis and more



Magnetic Bead Based

- Uses magnetic bead technology to extract DNA or RNA
- Available for DNA or viral nucleic acid isolation
- For use with Restriction Enzyme Digestion, Southern Blotting, PCR, qPCR



Reagent Based

- Uses chemical precipitation to extract DNA or RNA
- Available for DNA or RNA isolation
- For use with PCR, Southern Blotting, Northern Blotting and more



Plasmid Prep

- Uses silica gel membrane to extract plasmid DNA
- 3 sizes for different sample amounts available
- For use with Transfection, Sequencing, restriction enzyme digestion and more

PROTEOMICS PRODUCTS



Western Substrates

- Enhanced chemiluminescent western substrates
- Low picogram to low femtogram sensitivity
- Two different size options



PCR Products

- MasterMix for qPCR and reverse transcriptase qPCR
- Highly compatible with commercially available



Protein Staining Solution

- Ready to use stain for SDS-PAGE gels
- Formula allows for faster protein detection, higher sensitivity with no need for destaining or

PROTEOMICS PRODUCTS



Protein ladders

- 7 Protein ladders available in different sizes
- All Protein ladders are ready-to-use
- Stained and unstained ladders available
- Up to 2 years shelf life



DNA ladders

- 6 DNA ladders available in different sizes
- All DNA ladders are ready-to-use
- Stained and fluorescent dye ladders available
- Up to 2 years shelf life

ASSAY KITS

Metabolite Assay Kits



Enzyme Activity Assays



Apoptosis Detection Kits





Liquid Handling

Suzhou PRCXI Bioinformatics Co., Ltd is an innovative automation technology company providing one-stop solution for liquid handling.

It commits to R&D and manufacture bioinformatic products, integrate the instruments with the customer's applications to enable the customer to turn insights into outcomes at the speed required to thrive in today's complex world.

It provides the first-class equipment, consumables, services and solutions to make laboratory work process more accurate, efficient, repeatable and compliant.

PRCXI is one of the earliest companies in China to start up systematic research on pipette handling system. It has gained profound R&D experience and a large group of technical talents.



96 Channel Manual Workstation

Type: SC9000

Design: 20µl and 200µl

96 Passage

Advantages:

- 96-well pipetting
- General consumables
- Ease of use



Instrument	SC9300 Automatic pipetting workstation		
Plate	6 plates		
Channel	8 Channels		
Pipetting technique	Air displacement		
Compatible	Most standard consumables (SBS plates standard)		
Core index	Range	0.5 - 1000 µL	
	Accuracy	5µL±6%; 50µL±2%; 200µL±1.5%; 1000µL±1%	
	CV	5µL < 3%; 50µL < 1%; 200µL < 0.5%; 1000µL < 0.3%	
	Power requirement	Input voltage: 100-240vac ± 10%, frequency: 50/60hz ± 5%; output: 24V	
Maximum power	180W		
Working environment	5-40° C, 10-90% relative humidity, non-condensing		
Size	540 x 400 x 650mm		

96 Channel Semi Automatic Workstation

Type: SC9100

• **Design:** 96-well pipetting(0.5µL-1000µL)

• Embedded ipad

• Manual movement of two plates position

Advantages:

- Interchangeable modules
- Universal pipette tips, greatly reducing the cost of use
- Embedded ipad,
- Simple and easy to use
- Manual movement of two plates position



Instrument	SC9100 Semi automatic pipetting workstation		
Plate	2-3 plates		
Channel	96 Channels		
Pipetting technique	Air displacement		
Compatible	Most standard consumables (SBS plates standard)		
Core index	Range	Accuracy	CV
	0.5 - 10 µL	1µL±8%; 10µL±2%	1µL < 6%; 10µL < 1.5%
	3 - 50 µL	5µL±4%; 50µL±1.5%	5µL < 5%; 50µL < 1%
	3 - 300 µL	10µL±4%; 200µL±0.8%	10µL < 6%; 200µL < 0.5%
	10 - 1000 µL	10µL±6%; 500µL±0.5%	10µL < 5%; 500µL < 0.4%
Power requirement	Input voltage: 100-240vac ± 10%, frequency: 50/60hz ± 5%; output: 24V		
Maximum power	180W		
Working environment	5-40° C, 10-90% relative humidity, non-condensing		
Size	290×220×450mm		

96 Channel And 6 Plates Workstation

Type: SC9210

- **Design:** 96-well pipetting(0.5µL-1000µL)
- Embedded ipad
- 6 plates (custom up to 10)

Advantages:

- Universal pipette tips, greatly reducing the cost of use
- Embedded ipad,
- Simple and easy to use
- Fully automated



Instrument	SC9210 Automatic pipetting workstation		
Plate	6-10 plates		
Channel	96/384 Channels		
Pipetting technique	Air displacement		
Compatible	Most standard consumables (SBS plates standard)		
Core index	Range	Accuracy	CV
	0.5 - 10 µL	1µL±8%; 10µL±2%	1µL ≤ 6%; 10µL ≤ 1.5%
	3 - 50 µL	5µL±4%; 50µL±1.5%	5µL ≤ 5%; 50µL ≤ 1%
	3 - 300 µL	10µL±4%; 200µL±0.8%	10µL ≤ 6%; 200µL ≤ 0.5%
	10 - 1000 µL	10µL±6%; 500µL±0.5%	10µL ≤ 5%; 500µL ≤ 0.4%
Power requirement	Input voltage: 100-240vac ± 10%, frequency: 50/60hz± 5%; output: 24V		
Maximum power	180W		
Working environment	5-40° C, 10-90% relative humidity, non-condensing		
Size	600×300×560mm		

96 Channel And 6 Plates Workstation

Type: SC9300

- **Design:** precise pipetting(0.5µL-1000µL)
- 1-8 channels
- 6 plates

Advantages:

- Single row/gradient experiments
- Simple and easy to use
- Fully automated
- Thousands of workflows possible



Product parameters	
Plate	6 plates
Pipetting range	Wide range pipetting module (high precision pipetting from 0.5µl to 1000µl without replacement module)
Pipetting technique	air displacement
Channel	8 channels
Pipetting Parameters	CV: 5µL≤3%; 50µL≤1%; 200µL≤1.5%; 1000µL≤0.3% accuracy: 5µL≤6%; 50µL≤2%; 200µL≤1.5%; 1000µL≤1%
Orifice plate specification	Microporous plates, shallow well plates, and deep well plates, various test tubes, and most consumables on the market
Electricity	100-240VAC±10%, 50/60Hz±5%; 4V
Size	540X400X650mm

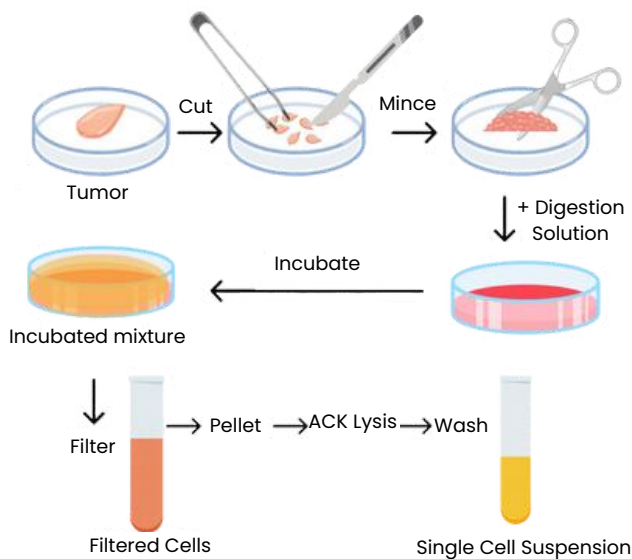
CoCultured

Animal & Human Dissociated Tissue & Tumor Cells (DTCs)

For use in therapeutic and diagnostic research

Dissociated tissue and tumor cells enable scientists to analyze tumor behavior and genetic changes in a controlled setting with single-cell analysis techniques.

This facilitates the development of targeted cancer therapies and enhances understanding of disease mechanisms, giving access to both cells from the primary tumor and the microenvironment



DTCs PRODUCTION WORKFLOW

Cells are isolated from sourced samples on demand.

Fresh samples are processed at CoCultured's facilities and cryopreserved cells are shipped on dry ice or liquid nitrogen worldwide.

In addition to the primary tumor tissue, it is possible to isolate normal adjacent tissue and normal tissue from several regions

Available Species:



Common Samples for Animal DTCs

Catalog Number	Species	Tumor Type	Product Description
DTC1001	Dog	Lymphoma	DTCs from canine lymphoma
DTC1002	Dog	Mast Cell Tumor	DTCs from canine mast cell tumor
DTC1004	Dog	Melanoma	DTCs from canine melanoma
DTC1005	Dog	Hemangiosarcoma	DTCs from canine hemangiosarcoma
DTC1006	Dog	Hepatocellular Carcinoma	DTCs from canine hepatocellular carcinoma
DTC1007	Dog	Bladder Cancer	DTCs from canine transitional cell carcinoma
DTC1009	Dog	Lung Cancer	DTCs from canine lung carcinoma
DTC1010	Dog	Thyroid Carcinoma	DTCs from canine thyroid carcinoma
DTC1011	Dog	Nasal Tumors	DTCs from canine nasal adenocarcinoma
DTC1012	Dog	Oral Melanoma	DTCs from canine oral melanoma
DTC1013	Dog	Soft Tissue Sarcoma	DTCs from canine soft tissue sarcoma
DTC1014	Dog	Prostate Cancer	DTCs from canine prostate cancer
DTC1017	Dog	Kidney Cancer	DTCs from canine renal cell carcinoma
DTC1018	Dog	Adrenal Gland Tumor	DTCs from canine pheochromocytoma
DTC1019	Dog	Skin Cancer	DTCs from canine squamous cell carcinoma
DTC1020	Dog	Gastric Cancer	DTCs from canine gastric carcinoma
DTC2001	Cat	Lymphoma	DTCs from feline lymphoma
DTC2002	Cat	Squamous Cell Carcinoma	DTCs from feline squamous cell carcinoma
DTC2003	Cat	Mammary Carcinoma	DTCs from feline mammary carcinoma
DTC2004	Cat	Fibrosarcoma	DTCs from feline fibrosarcoma
DTC2005	Cat	Pancreatic Cancer	DTCs from feline pancreatic carcinoma
DTC2007	Cat	Oral Carcinoma	DTCs from feline oral carcinoma
DTC2008	Cat	Intestinal Cancer	DTCs from feline intestinal adenocarcinoma
DTC2010	Cat	Lung Tumors	DTCs from feline lung tumors
DTC2011	Cat	Thyroid Tumors	DTCs from feline thyroid tumors
DTC2014	Cat	Adrenal Gland Tumor	DTCs from feline adrenal gland tumors
DTC2015	Cat	Skin Cancer	DTCs from feline basal cell carcinoma
DTC2016	Cat	Kidney Cancer	DTCs from feline renal carcinoma
DTC2017	Cat	Prostate Cancer	DTCs from feline prostate carcinoma
DTC2019	Cat	Bladder Cancer	DTCs from feline bladder carcinoma
DTC2020	Cat	Soft Tissue Sarcoma	DTCs from feline soft tissue sarcoma

Available from all samples:

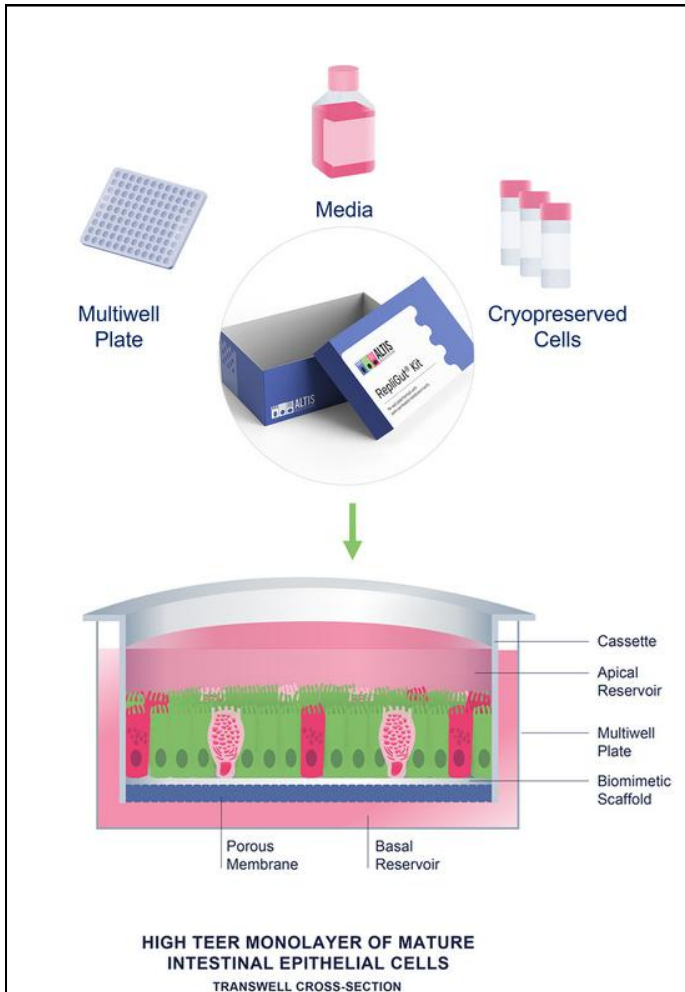
- FFPE Slides
- Frozen Tissue

Optional Characterizations:

- IHC screening
- FACS
- RNAseq
- qPCR



Human intestinal models



RepliGut® Systems

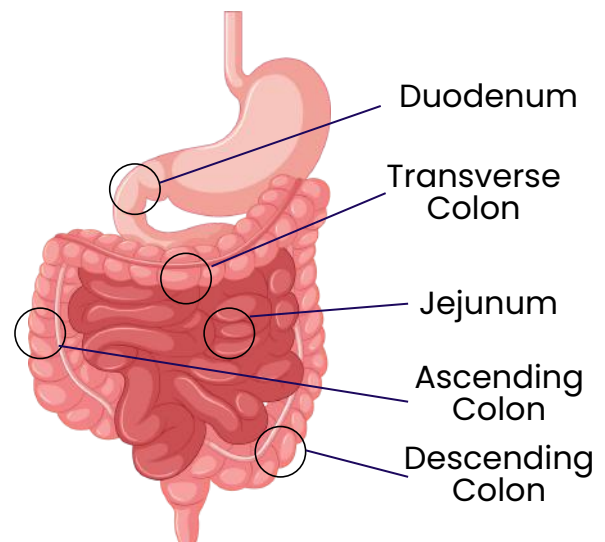
Altis Biosystems has pioneered the creation of RepliGut® Systems, a collection of in vitro models derived from stem cells and designed specifically for pre-clinical drug discovery.

RepliGut® models are designed to replicate the complex structure of the human small intestine and colonic epithelium using a standard user friendly format.

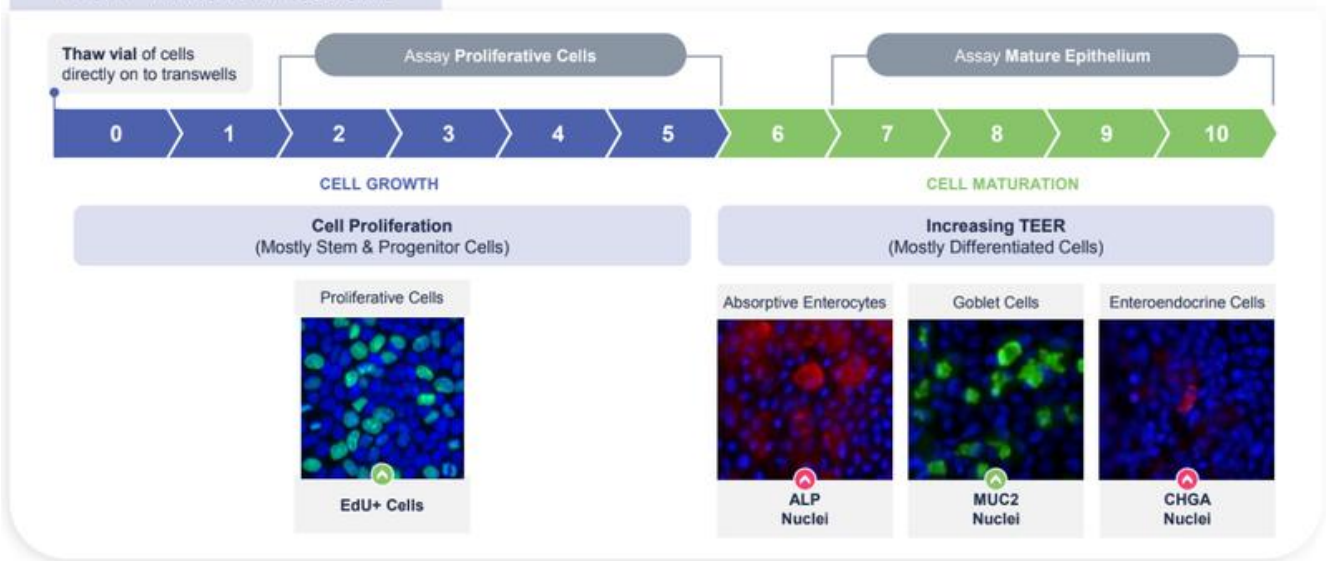
RepliGut models deliver valuable data insights, rapid screening capabilities, and an unparalleled biobank of ethically sourced donor intestinal cells, paving the way for more effective compound screening, disease modeling, and microbiome research.

Multiple Regions & Formats Available

RepliGut® Planar kits can include stem cells from any one of 5 distinct intestinal regions. They are all available in 12-well or 96-well transwell plates.

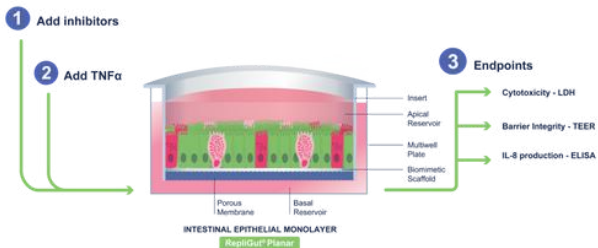


10-DAY TRANSWELL CULTURE

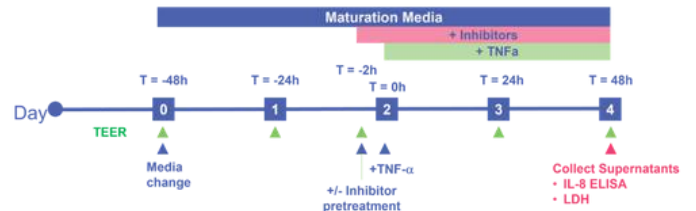


InflammaScreen™ Services

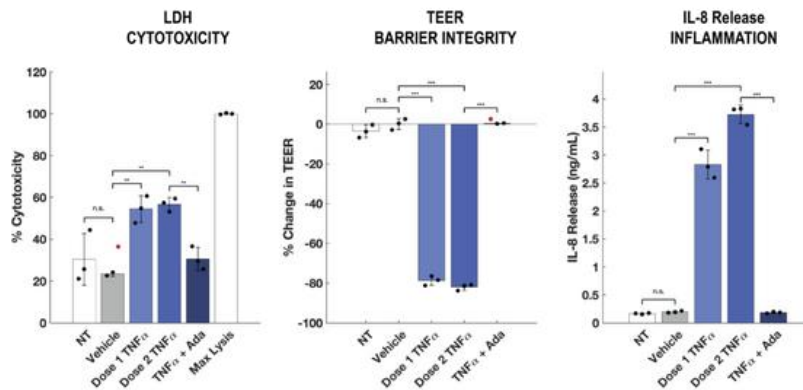
Assay Schematic



Timeline



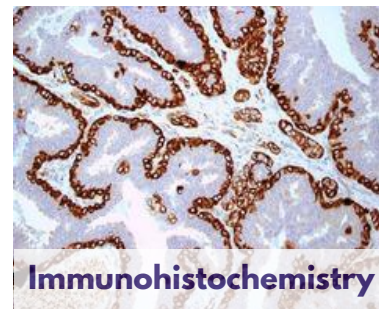
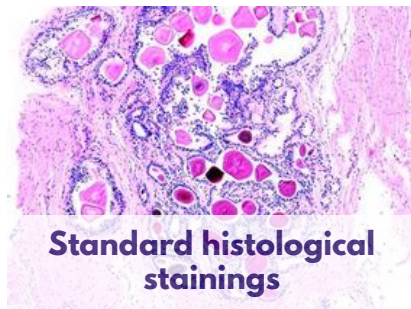
Readouts



provitro

360° Services for IHC, ISH, TMAs and Pathology

Solutions for the whole workflow



RNA in situ hybridization



Tissue Microarrays (TMA)



Greetings from Nuremberg, at the heart of Europe!



Sellomics

FROM LAB TO SUCCESS

Contact Us



Sellomics GmbH

Veillodterstraße 29
90409 Nuremberg
Germany



+49 172 460 5978



info@sellomics.com